



# Irish Woodturners' Guild Dublin Chapter

Editor  
Chris Hayes  
85 Willow Park Grove  
Dublin 11

Tel 01-8422525  
Email-chris Hayes@eircom.net

Feb-March 2003 newsletter

Feb-March 2003

## Editorial

With Spring approaching fast we can all expect to be busier in our workshops without suffering from hypothermia. And of course our competitions secretary will hope to see the entries increasing as the weather warms up. Interest has improved measurably in recent months but he feels the newer members should join in as soon as they can, which will give them a stronger sense of belonging to the group and help them to become known within the Chapter.

Thanks to all who contributed to this newsletter as without you I would have one hell of a struggle to fill space.

And thanks to all you sycamore lovers who came out to Glasnevin and relieved me of most of the tree. There's very little left now but you are still welcome to come and have a look. My particulars at top of this page.

It was gratifying to see the turnout for the Botanic Gardens visit during February and it might be worth repeating it another time. There is a report on this elsewhere. —Chris Hayes

*A seasonal entry from the beginners section last December.*



Michael Fay

## Inside this issue:

Jan demo Paddy Lynch 2

Botanic visit 3  
Competition results

Feb demo Ollie Burke 4

Larch Hill trees 5  
Help for a traveler

An idea for wood 6

A talk on wood 7

Ads and notices 8

## Chapter news

Tree week starts on Sunday March 2nd 2003. Official opening is at the Botanic Gardens at 12 noon on the same day. Barry Dunne will be resuming tree maintenance and tree planting in Larch Hill on March 8th and 9th. Help from members and friends is welcomed. See also page 5

The Alzheimer's Society benefited from last December's exhibition in Tallaght to the amount of 1135 euro. Cecil Barron's sale of timber in Terenure realised a further 350 euro. The society are very appreciative.

We are sorry to hear that Norman Bannister and Peadar McArdle have been ill and we wish them a speedy recovery.

The Chapter offers its sympathy to Tom McKeon and John Foley whose mothers died recently.

Thanks to Henry East for his very enjoyable workshop for women. Now, who's next to do a workshop for the ladies?

Terry Cruise, who looks after the books and videos, will take orders for Woodworking Magazine and steb centres if there is enough interest amongst members. Contact him on 2956363. He thanks all who contributed books, videos or magazines to the collection.

## Future events

### Demos

March -Christy Glynn

April-Michael McGee

May-Francis Morrin

June- Jim Johnston

July- Peter Mulvaney

### Competitions

March-lidded bowl, min 6in

April-Bread board, all grades

May- tent peg mallet

## January Demonstration.

### Barrel Lamp by Paddy Lynch

Paddy's barrel lamps are well named as they are made up of staves or sections, and turned to the shape of a barrel (rather than bent as in true coopering) and very attractive lamps they are. In order to make the demonstration as complete as possible, he brought along three lamps;

- a) one completed and ready for wiring up electrically,
- b) one with the sections cut and ready for glueing,
- c) and one glued and ready for the complete turning operation.

Each lamp is made up of 12 sections, each section having an included angle of 30 degrees, 1 inch wide at the inner end and one and one half inches deep. This is ample to achieve min. outside diameter of 6 inches at widest point after shaping, which is the approx. size of the lamps normally made by Paddy.

Regarding cutting the sections, Paddy emphasised that extreme accuracy is essential, and a good saw with a tilting blade is preferable, in his opinion, to a tilting table. A suitable method discussed was "with circular saw set to cut 15 degrees off vertical (or 90 degrees) and using a one and one half inch thick timber, reverse 180 degrees for each alternate cut."

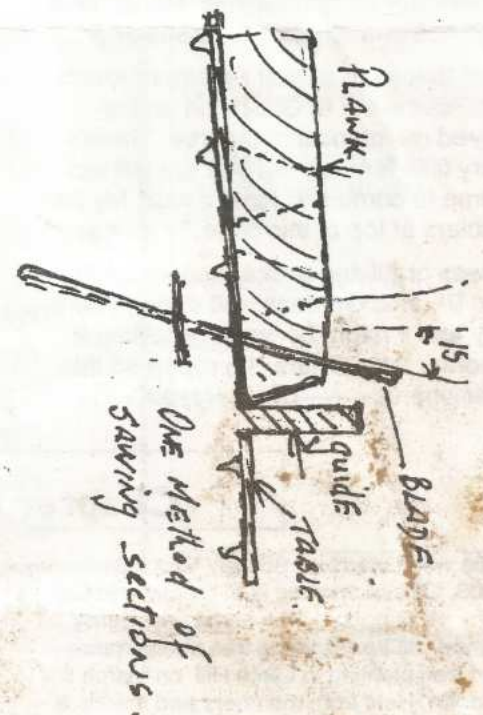
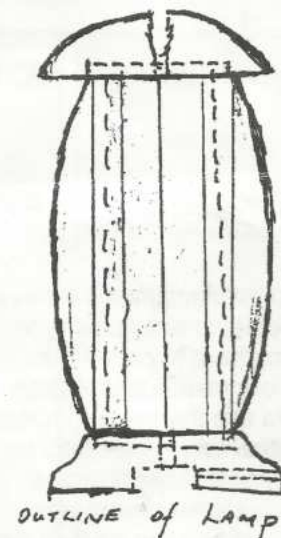
The 12 sections can be of contrasting or similar woods, but it is essential to have kiln dried stock; even then, the stresses relieved by the cutting process can sometimes result in slight changes in shape. After glueing, the barrel is held in position by appropriately sized jubilee clips at each end. This enabled the section to be mounted between centres and, with a roughing gouge, turned to a cylinder a bit over 6 inches in dia. From the centre the barrel is tapered to approx. 5 inches at each end and a flat approx. 10mm. wide is turned at each end to accept the recessed top and bottom. Outside is then sanded and ready for the finish, and Paddy uses two coats of basecoat rubbed in, and finally, a spray finish.

The bottom cover of mahogany or iroko, approx. 25mm. thick and planed flat, was mounted via screw chuck and turned to approx. 200mm.; then profiled to give a curved edge and recessed to give a snug fit. After sanding and drilling for the cable exit, the bottom was fitted in position, using glue and countersunk screws into the original holes used by M.D.F. pad. The bottom is finally covered with green baize.

The top cover of similar wood and same size approx. as bottom cover, was mounted on screw chuck (after first accurately drilling screw mounting hole since it was reversed later onto the screw chuck) and then recessed to be a snug fit on barrel. After reversing onto the screw chuck and checked for running true, the top was turned to size with a domed profile and sanded ready for finish. After removal from screw chuck a 10.5mm. hole was drilled through screw hole for the lamp holder fitting. The top cover was then ready for glueing in position. Finally Paddy demonstrated the complete wiring of the finished lamp with the wiring kit he had brought along, which, when used, complies with the E.U. certification requirements for such items.

Our sincere thanks to Paddy for a well prepared and skilfully carried out demonstration, in that easy going approach, sprinkled with stories and anecdotes, all of which added up to a very informative and entertaining morning.

M.Forde.



39  
13  
—  
22

32  
15  
—  
47

## BOTANIC VISIT



Wednesday 12th February was a beautiful Spring day and a visit had been arranged to the Botanic Gardens. About 20 from the Chapter turned up hoping to "find out a bit about the gardens".

First we met **Matthew Jebb** who is a taxonomist. I knew you'd ask. I haven't the time or space to explain but what he doesn't know about plants and trees and timber could be written on the point of a pine needle. (*The OED defines taxonomy as the principles of classification* -ed)

We were shown records from Australia some of which dated back about 300 years, with specimens included. The complete record of Irish plants are stored here in a "mitefree" environment, with humidity maintained at about 10%! Matthew quizzed us on ancient wooden objects from his collection without eliciting many answers. However questions from the assembled woodturners came thick and fast and were dealt with professional ease.

We hardly had sufficient time for the next item, a tour of the gardens with **Theresa Sinnott** as our guide. She showed her expertise in naming every tree and shrub along the way while giving a brief history of the gardens and where the plants originated.

Suddenly it was time to go and say thanks to Matthew and Theresa for a wonderful visit. Some of the comments heard as we walked to the carpark—'I'm coming back here soon', 'I never knew this place existed', 'When will the next trip be and could it be Kew sometime or maybe Chelsea?'—*Sean Dunne*

## COMPETITION RESULTS 2003

| 2003            | 0            | Crabtree   | Finlay     | Frame      | Excluded Bowl |
|-----------------|--------------|------------|------------|------------|---------------|
| <b>Advanced</b> | <b>score</b> | <b>Dec</b> | <b>Jan</b> | <b>Feb</b> |               |
| Michael McGee 3 | 39           | 15         | 13         | 11         |               |
| Cecil Barron 1  | 32           | 11         | 6          | 15         | 15            |
| Frank Foley 1   | 20           |            | 11         | 9          |               |
| Albert Sloan 1  | 20           |            | 15         | 5          |               |
| Pat Walsh       | 14           |            | 9          | 5          |               |
| James Gallagher | 13           |            |            | 13         |               |
| Des Mc Mahon    | 13           | 13         |            |            |               |
| Tony Lally 3    | 12           |            | 7          | 5          |               |
| Owen Furniss    | 9            | 9          |            |            |               |
| Michael Deegan  | 7            | 7          |            |            |               |
| Adrian Finlay   | 7            |            |            | 7          |               |
| Philip Kerr 6   | 6            |            |            | 6          |               |
|                 | 0            |            |            |            |               |
|                 | 0            |            |            |            |               |
|                 | 0            |            |            |            |               |
|                 | 0            |            |            |            |               |

### Experienced

|                  |    |    |    |    |
|------------------|----|----|----|----|
| Sean Ryan        | 39 | 15 | 11 | 13 |
| Michael Fay      | 33 |    | 24 | 9  |
| Tom McKeon       | 30 |    | 15 | 15 |
| John Holmes      | 22 | 13 | 9  |    |
| Chris Hayes      | 18 |    | 13 | 5  |
| Pacelli O'Rourke | 17 | 11 | 6  |    |
| Graham Brislane  | 11 |    |    | 11 |
| Billy Kellaghan  | 10 |    | 5  | 5  |
| Niall Cahill     | 9  | 9  |    |    |
| Donal Browne     | 7  | 7  |    |    |
| Frank Gallagher  | 7  |    | 7  |    |
| James Nolan      | 7  |    |    | 7  |
|                  | 0  |    |    |    |
|                  | 0  |    |    |    |

### Beginners

|                | score |    |    |    |
|----------------|-------|----|----|----|
| Paddy Finn     | 29    | 9  | 11 | 9  |
| Eugene Colgan  | 28    | 13 |    | 15 |
| Una Sheeran    | 13    |    | 13 |    |
| David Laing    | 13    |    |    | 13 |
| Irene Christie | 11    | 11 |    |    |
| David Cox      | 11    |    |    | 11 |
| Janet Mulhern  | 9     |    | 9  |    |
| Jimmy Rice     | 7     |    | 7  |    |
| Kevin Dowling  | 7     |    |    | 7  |
|                | 0     |    |    |    |
|                | 0     |    |    |    |
|                | 0     |    |    |    |

## February demo Pot type vessel, by Ollie Burke, Galway Chapter

After travelling across the country to Terenure College and navigating various roadworks on the way, Ollie lost no time in getting down to the demo. As he mounted by faceplate a circular block of unseasoned beech approx. 6ins. long by 8ins. in dia. he explained he was going to rough turn a vessel to a shape similar to a pottery vessel he had seen recently; the shape and proportions which impressed him and challenged him to copy. This is a practise, he reminds us, that can lead to improving a turners style, hence he is always on the look out for new shapes and styles – books, especially antique books, background scenes in TV programmes, indeed all around are shapes that have that extra something that makes them stand out. However, he advised it can be difficult to copy that extra something from just a mental picture, and many attempts may be required to get it just right.

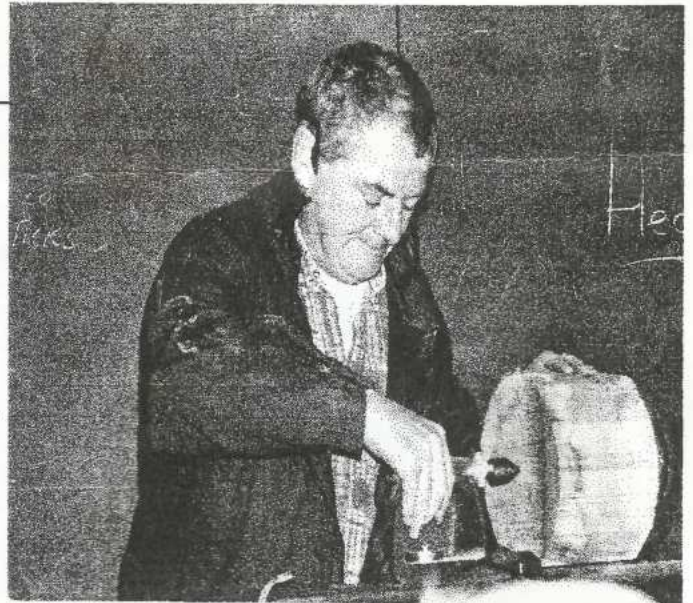
With the beech mounted and supported by the tail stock, the roughing gouge was used to roughly shape the outside. Parting tool then used to cut recess for chuck, and when chuck mounted, the outside was trued up and with lathe speed at 800rpm. hollowing was ready to start. Ollie demonstrated correct stance and tool position to get flowing cuts from edge to centre, emphasising that the tool rest must be smooth; any marks require removal; a rub with sandpaper usually sufficient. Hollowing commenced with a 13mm. bowl gouge, and since only one side of gouge is normally used going from edge to centre, so as to use the other side fruitfully. In the early stages of hollowing he cut by pulling the gouge out from centre using that other side. As hollowing got deeper tool rest was moved in to lessen tool overhang and minimise vibration. The best position is if tool can be kept over centre (mount point) of tool rest. As hollowing got deeper a freshly sharpened 13mm. bowl gouge with a more suitable bevel was used for finishing cuts. The outside of neck then finished after most of inside hollowing done, as neck may alter shape during inside hollowing. A spindle gouge was used for final neck shaping cuts. The triple grooved bead at approx. mid height shaped with parting tool and shaping at each side of the bead shear shaped with gouge until desired profile obtained. A final tidying up with gouge then done, with the advice to be very careful as slight alterations can change the desired shape.

Ollie then returned to the curved inside for finishing cuts, which were done with a sharp bowl gouge down to the flat bottom, which is finished with careful scraping using a flat scraper. Sanding starts with 120 grade, down the grades to 320, keeping the abrasive moving all the time.

With the vessel finished, we were shown a wide range of various and interesting defects which he had come across during his work, some in wet turnings drying out, some appearing as the wood was being turned, more in the tree as it was being sawn into logs, some in old elm which had been dead for long years. Mentioning elms being wiped out by the Dutch elm beetle, Ollie told us that the beetle had not travelled to some elms in rather remote areas in the West and they have remained healthy. He collects and germinates for planting out up to 400 seedlings every year. Now that is an example that we all should try and copy in some form or other.

That heartening news brought us to the end of a superb demonstration where tool techniques and working methods, combined with creative ideas, made for a most enjoyable morning for which we say to Ollie "congratulations and many thanks for everything"

—M.FORDE.

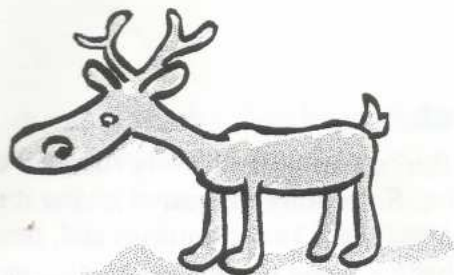


### **A welcome to new members**

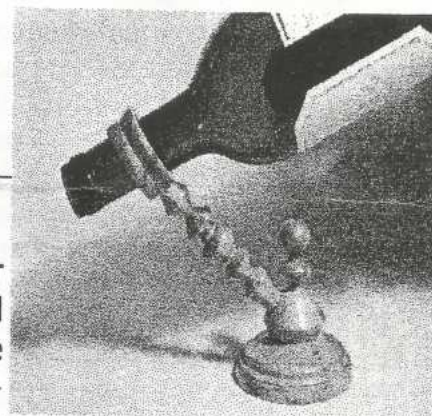
David Laing  
Derek Berry  
Gerard Patterson  
Noel White  
Thomas Rossiter  
Denis Horgan  
John McCarthy

*We hope you enjoy  
the activities of the  
Chapter*





Competition March 2002  
Beginners' section



## Larch Hill Trees

On the 11<sup>th</sup> of January we had our first trip of the year to Larch Hill for a little tree maintenance. This involved clearing grass and weeds from around the base of the young trees. We worked for about two hours and managed to get a lot done. After a cup of tea we went for a walk and inspected the area known as the Walnut Grove. This area was planted about ten years ago and unfortunately the trees have not done well. We think that the altitude does not suit Walnut.

Of the hundred or so trees planted **only one** is making any progress. Over the last few years I have replaced a lot of the almost dead ones with other species.

In January I planted two Ash trees and in Feb Michael Kenny planted a Laburnum and two Holly. On our second trip on the 8<sup>th</sup> of February we concentrated our efforts in this area again doing a little tidy up job.

## Tree Week

We will be visiting Larch Hill to plant some trees and do some maintenance on two days in March.

Saturday the 8<sup>th</sup> of March at 10.30 .

Sunday the 9<sup>th</sup> of March at 12.30.

If anybody has trees to plant bring them along but beware; do not bring too many as I do not know how many people will turn up.

You may also bring Shovels, Spades, Forks, Pickaxe, Sledgehammer and any other tools you may require.

I would like to thank the following for their help so far this year:

**Sean Dunne, Bill Brazil, John Holmes, Michael Kenny, Dave Cox, Colm McIntyre and Harry Kampff.**

Barry Dunne.

### Can you help?

From: Niall Cahill  
<ncahill@iol.ie>

To:  
<chrishayes@eircom.net>

I'm planning to go to the AAW convention in Pasadena and they have a theme for international visitors.. the gist below. Any ideas on "Lids"?

(I'm leaving on 26th June).

"Put a Lid On It" will be the theme of the AAW's next juried show, which will premier during the 17th annual AAW Symposium in Pasadena, California, next summer.

Anything Goes -

- a.. A lid on a container
- b.. A lid to cover
- c.. A lid to protect
- d.. A lid to conceal

something mysterious  
We are looking for an aesthetic experience, using all senses at your disposal - sight, touch, sound, smell - try to find something that will show and create a sense of vitality, emotion and feeling for the material.

www.nirvanawood.com

## Liquid Dishwasher Detergent Treatment

I was interested at the February meeting when Ollie Burke presented a lovely roughed out spalted beech bowl that he said was only fit for the fire. Somebody suggested giving it the washing up liquid treatment. When I got home I began to make some inquiries and, thanks to Fran Morrin, was directed towards an interesting website – [www.ronkent.com](http://www.ronkent.com) – that gave me the basic information on this technique. Maybe others would be interested.

Ron Kent describes setting out to find “something that might soak in, harden, and become part of the wood, bonding the fibers more firmly while also imparting a lubricating quality” to the wood. “It had to be transparent and non-staining.”

By chance he tried concentrated liquid dishwasher detergent and it worked wonders. Initially he simply diluted one part detergent with one part water and rubbed it into the roughed out blank. He describes the benefits. “First there is the advantage of stabilizing the wood; a great deal less “moving” and warping, both while working on the vessel and after it is taken off the lathe. A second favorable difference shows up in cutting. The shavings are a delight! Clean, long, cohesive ribbons, both for fine trimming and for the macho adversarial plunge-cuts that characterize my favored rough-shaping “technique”. It feels almost as if the wood has been lubricated and allows the edge of the tool to slide smoothly through the cut. I never did figure out what “conditioning” means, but whatever it is, I’ll bet detergent does it!”

On the same website Leif O. Thorvaldson describes his experience of the technique. “One fateful day, browsing on my computer ... I encountered a very lovely website by Ron Kent (<http://www.ronkent.com>). He had some beautiful Norfolk Pine turnings -- very thin -- and used some unique finishing techniques. All very nice, but what struck me was a technique he had developed for stabilizing and conditioning wood. He had tried the expensive route, but was looking for something under \$50 per gallon. To make his story short, he found that Costco's house brand (Kirkland) liquid dishwashing detergent mixed with an equal amount of water provided hitherto unavailable qualities in both conditioning and stabilizing of wood for almost immediate turning and finishing

I went to Costco and purchased four half gallon containers of the magic elixir along with a sturdy plastic storage bin of sufficient size to hold the mixture and some bowl blanks. Upon arrival at home, I emptied the detergent into the container and added an equal amount of water. From then on, I would take primarily green wood and rough turn in one day, soak overnight, and finish the next day. Sometimes I didn't finish it on the second day and left it mounted on the lathe overnight and sometimes for a several days. Surprise! They didn't crack! I have since taken green wood, rough turned it, soaked it about four hours and then finish turned it and finished it in one day. In the six to eight months I have been using this technique, I haven't had one bowl crack. A few had a bit of movement, but it was very slight. I have used the following woods: black walnut, vine maple, maple, oak (kiln dried), yew, honey locust, fruiting cherry, birch, plum, apple.”

As I write this article (or rather copy it from Ron Kent's website!) I have tried the soaking process using washing-up liquid and so far have had excellent results. I'd be interested from other turners who have tried the technique.

—————*Michael McGee*

## Talk by Graham Brislane at the February meeting

### SYCAMORE / *Acer pseudoplatanus* L

|                  |  |  |
|------------------|--|--|
| Type:            | Deciduous  | Belongs to the Maple family  |
| Size:            | 60 to 70 feet tall<br>Up to 9 or 10 foot girth<br>With a wide spreading crown and short trunk  |  |
| Habitat:         | Good humidity and soil moisture<br>Shady and moist sites, usually strewn rock fragments and boulders<br>Chiefly on substrata rich in calcium, close to where water seeps from the ground   |  |
| Located:         | Distribution of sycamore is associated with Beech,<br>Is centred in Central Europe<br><br>Extends from Belgium to the Caucasian mountains<br>And from Northern Germany to Southern Italy<br><br>Dominant forests are small, and mainly found in the Western Alps<br>In these mountain regions, a tree can live for up to 500 years<br><br>Only becomes a dominant canopy tree, in habitats not suitable for Beech<br><br>Does not naturally occur in most oceanic areas of Europe, but<br>Following planting it has become widely naturalised<br>Was introduced in Great Britain in the 16 <sup>th</sup> century<br>Now one of the commonest tree species in the British Isles |  |
| Bark:            | Grey-Brown to Red-Brown<br>Breaks up into large scales that often exfoliate to reveal orange   |  |
| Leaves:          | Opposite, simple, 5 lobed, 3 to 6 inches long and broad  |  |
| Flower:          | Monoecious, yellow in a 3 to 5 inch hanging cluster  |  |
| Fruit:           | Pair of Samaras, spreading at about 45 degrees, each 1 1/2" long<br>Mature late summer to early autumn<br><br>Is tapped for Maple Syrup  |  |
| Timber:          | Colour   | white to cream coloured.<br>Similar to Poplar, but Poplar is much softer |
| Drying:          | If not end-reared soon after sawing, it can develop grey to blue streaks.<br>Sometimes has a wavy grain, and is known as <u>Rippled or Fiddleback Sycamore</u><br>Used for making backs for fiddles<br><br>It rises in value, the longer or more it is left to dry   |  |
| How does it Turn | Is a good wood to turn and has many uses in:<br>Furniture, kitchen and butchers blocks, and dairy utensils<br>Also used for pyrography, because of it's white colour<br>Takes dye very well, due to it's light colour<br><br>I found it similar to working with Beech.   |  |

120  
1.65

12x 117x

**Wood for everything**


Seasoned timber, native and imported.

Bowl blanks and lamp stock.

Lamp kits and cellulose sealer, ready mixed

Call **Tom Gibson** on  
01 -8420634 or 086-8241470

**CLOCK MOVEMENTS AND WATCH INSERTS, AND ACCESSORIES**



**Philip J Dix and Co.**  
6 Aston Quay  
Dublin 2  
Tel 01-6717144/6710579  
Hours, Mon to Fri only, 9-5  
Closed for lunch

**Notice to turners**

Check out these websites

**Dublin Chapter** -<http://homepage.eircom.net/~dciwg>

**Owen Furniss** -<http://homepage.eircom.net/~furniss>

(note: Owen maintains both)

Owen is also the Chapter's representative on the newly formed Guild Council.

**Woodturning seminars and such in 2003**

Kerry-April 26th

Provo, Utah,-May 8-10th

Limerick-May 31st


Ulster-June 14th

Gorey- June 28th

Loughborough, UK, - Aug 8-10th

Guild- Maynooth, 10-12th Oct

**Our new committee**



**Chairman**—Joe O'Neill, tel. 2989441/087-6230162  
**Secretary** -Tom McKeon, tel. 8340185  
**Treasurer**—James Gallagher, tel. 4505981  
**Workshops**— Frank Gallagher, tel. 4902879  
**Videos/Books**—Terry Cruise, tel 2956363  
**Competitions**—John Holmes, tel 2894193  
**Supported by**—Pat Walsh and Albert Dooley  
**Auditors**— Harry Kampff and Tom McDonagh

**Guild AGM 2003**

**Venue** —Ashling Hotel, Dublin (beside Hueston station)

**When** ..Sunday 30th March

**Starts**—2pm

66

