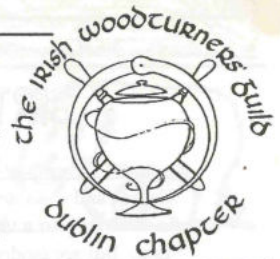


# Dublin Chapter, Irish Woodturners Guild



Newsletter Volume 2, Number 3 July, August 1995

## "AND KEEP YOUR TOOLS SHARP"

**B**ots of exciting details this month. Firstly the committee have decided to produce the newsletter on a by-monthly basis, but do not fear, it will be as full if not fuller of hints tips, articles, reviews and features, so keep your correspondence coming.

After the official hand over of the lathe to Terenure College at the June meeting, it now seems to be confirmed as to our presence there and the goodwill afforded us by the college. The words of wisdom spoken by those involved in the hand over and receipt of the gifts are in evidence by the quote that titles this editorial this month as being practical and to the point. May we spend our time well in harmony with the College.

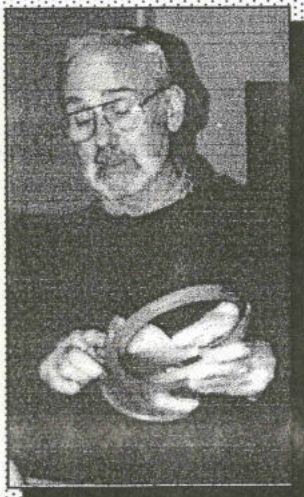
The long awaited league table has finally been compiled and completed and we will keep you up to date with it every month and by-monthly in the newsletter.

Three letters this month, the

first is a letter of thanks for our donation from the proceeds of Blackrock, the second from Abbey Woods in Baldoyle announcing some good supply news for all of us, the third 'Green and Wet turning' is a reminder of our past, lest we forget it.

And to the ladies amongst us, let us see a lot more entries in the competitions. Keep them simple but keep them coming we all want to see your work. Quote by an American instrument maker 'Lara Espley' in 'American Lutherie' as advice to want-to-be luthiers "Man who says it cannot be done should not stop woman who is doing it". "Anyone can build instruments if they have the patience and determination to do it". And the same applies to turning.

And finally help us to help you. If you like what you see - tell others, if you don't- please - TELL US!! We can only make improvements if we know where the problems are. Phillip Murray Ed.



June Winner Harry  
Kampff With his  
African Oak Mirror

### Inside this Month

"AND KEEP YOUR TOOLS SHARP" (Editorial)	P1
To all who work in Wood (Chairmans Address)	P1
Birchwood Calender	P2
Letters	P3
Photo Gallery	P4
Competition League table	P5
Teachers Wanted	P5
Committee News	P5
Be a Contributor	P6
Articles Deadlines	P6
Small Adds	P6
Acknowledgements	P6

## To all who work in Wood

**O**ur June 1st. Saturday meeting seemed to have a special air about it. The attendance was large and thankfully the ladies were present in force. I was particularly pleased to see the two College instructors John and Barry and the Rev. Fr.

showed a good knowledge of woodworking .

I know we all appreciate the generosity of the College in allowing the use of their lecture hall and other facilities. The Committee

To all who work in Wood  
*continued on page 2*

## BIRTHWOOD CALENDAR

**Birch** 24 December - 20 January

Elegant and sociable, you have refined tastes plus a vivid imagination. But are modest with it!

**Rowan** 21 January - 17 February

You are known for your charm and generosity, though your affectionate nature could make you flirtatious. You always though, remain kind and gracious.

**Ash** 18 February - 17 March

What a dynamic and popular person you are! Despite your impulsive nature, you are rather fastidious but absolutely trustworthy.

**Alder** 18 March - 14 April

Some might call you stubborn but this positive streak makes you valued for your steady and zealous attitude to life and liked for your integrity.

**Willow** 15 April - 12 May

You are often accused of being dreamy, even moody, although your changeable nature includes a strong urge to be creative and can be most appealing.

**Hawthorn**

13 May - 9 June  
Aren't you a cheerful and optimistic person! Passionate but faithful too, in your own reflective way.

**Oak** 10 June - 7 July

You may be called proud and independent, although you are good at self-discipline too. Your vigour of mind and body makes you very likeable.

**Holly** 8 July - 4 August

Your calm and tolerant good sense can always be relied on. You are also perceptive and succeed in what you do.

**Hazel** 5 August - 1 September

What a clutch of virtues you possess! Not only are you compassionate and dedicated but you are modest and self-effacing too.

**Vine** 2 September - 29 September

Always restless, you have keen sense of adventure, plus the courage to go on. No wonder you are usually successful.

**Ivy** 30 September - 27 October

You are an extraordinarily complex character but, as well as being original and clever, you are also a romantic at heart.

**Whitten** 28 October - 24 November

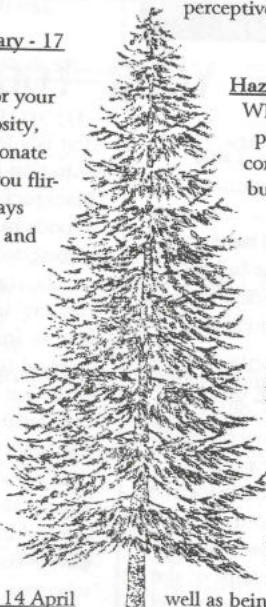
Self-assured you may be, admired for your energy and versatility but you are also inclined to be impatient and rather secretive.

**Elder** 25 November - 22 December

With an artistic temperament like yours, it is no wonder that you act spontaneously but are also inclined to be jealous. You enjoy refined but intellectual pleasures.

**Beech** 23 December

If this is your birthday, then you are not only a sensitive and tender soul but also unassuming. Fair comment is your forte.



Thanks to L'ETACQ WOODCRAFTS  
(CHANNEL ISLANDS) ☎ 0534  
82142

To all who work in Wood  
*continued From page 1*

felt that we should make some contribution and so it was decided that a new lathe would be appropriate and who better to present it than Frank McCann. Frank is an ex pupil of the College and as you know was instrumental in "getting us in", his presentation speech was a 'gem'.

You all probably noticed that the clock on the wall had seen better days. Well as some of our own lads are inclined to be a bit longwinded Peter Mulvaney decided to do something about it, the clock I mean. He produced a beautifully carved plaque clock which was universally admired. Incidentally wasn't it great to hear the 'Cupla Focail' in his presentation.

A sincere word of thanks to the young ladies who come up with the tea and biscuits.

Seamus O'Reilly  
(Chairman)

*The tree, the tempest  
with a crash of wood  
throws down*

*In front of us, but not  
to bar our passage to  
our journeys end for  
good*

*But just to ask us who  
we think we are  
(Robert Frost)*





## Green and Wet Turning

**Y**ou know, 'green and wet' applies to more than just the wood we turn. It can also be applied to some of us turners as well! As a very new member of the Guild I think I am well qualified for the title. So spare me a thought and help me to dry without cracking.

I was first introduced to turning by a chance hearing of Mick Healy on East Coast Radio. As we all know Mick can make it all sound so easy. The next step was to find a course. What I really found was a glorified demonstration - ten students, one lathe and very little 'hands-on'. This was not a good start. By the end of the course I wasn't even able to make respectable shavings let alone the mandatory mushroom!

Luckily I heard about the Guild and ventured along to what must have been one of the last meetings in Larch Hill Sandy (Ingle) and the finishing techniques. When you say it like that it sounds a bit like a pop group! The trouble is everybody else seems to be such experts, to know everybody else and to turn out beautiful pieces with such ease. But it's not that easy to break into the Chapter. So here are a couple of suggestions that the committee might consider.

1. When a new member comes along, have an established member of the Chapter act as his or her 'buddy' for the first few meetings. The buddy could introduce the new turner around, explain the ropes and perhaps even arrange for the newcomer to visit a workshop or two.

2. Appoint a 'new members' officer to the Chapter committee. This person could advise the new-

comer on equipment, sources, tips, competitions etc.

3. Arrange training sessions in the basics, specifically geared towards the new member.

4. Use a dedicated section of the Newsletter as a 'Newcomers Corner'.

In making the above suggestions I can hear the cries of 'hand holding, aren't they big enough and old enough to look after themselves'. Well that may well be a fair comment but think back to your own entry to the world of turning and the Guild, can you honestly say such a system would not have been of benefit?

Come on, give us a hand, - thanks chuck!

Philip Byrne

*Many thanks Philip for your comments. Yes it is so easy for those of us who have been around for a while to forget the problems with joining any association and getting to grips with jargon and terms. I will bring these points up at the next committee meeting and report back here. So do keep your comments coming as they are relevant to all of us. Ed*

St Teresa's Day Care Centre  
Temple Hill  
Blackrock  
June 1st 1995

Dear Secretary  
Many thanks for the Chapter's very generous donation of £400.00. You are indeed very good to us in the Day Care Centre and we assure you of our gratitude and prayers.

Our people here say a Decade of the Rosary every day for all our Benefactors, God bless and reward your generosity,  
Again thanking you,  
Yours gratefully,  
Sister Maureen  
Daughter of Charity.



## Abbey Woods

Baldoyle Industrial Estate

Dublin Chapter Secretary

Dear Sir,

Abbey Woods, timber and veneer importers, have been based in Baldoyle since 1983. We carry the most comprehensive stocks of temperate hardwoods and veneers in the country. Our main customer base is the joinery, kitchen furniture and trailer body trades.

However a recent development undertaken by ourselves which I think your members will find of interest is the introduction of our new Craft Centre.

Abbey Woods are now the Irish stockists for Craft Supplies Ltd, a UK based company with which I am sure you are familiar. We now have on display an extensive range of bowl blanks and squares (up to fifty exotic timber species are in stock), tooling and craft accessories. To complement these items we also have a full range of timber finishes (Liberon and Rustins) plus various glues and inlays.

We would like to invite your members to come and visit our centre, (See Advertisement back page) also we would welcome any suggestions from your members on other lines we should stock.

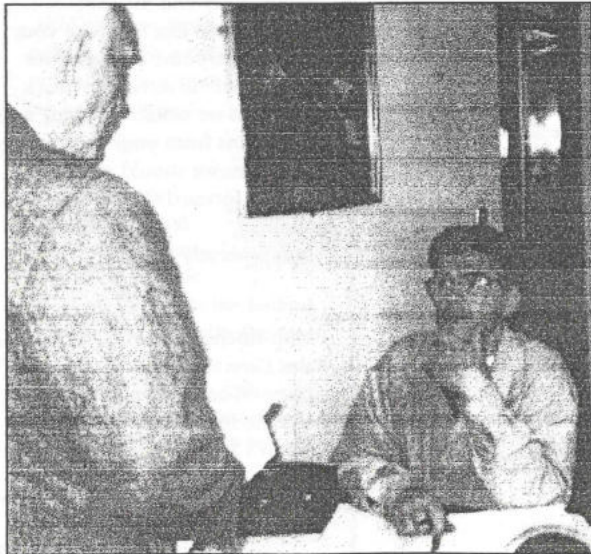
Looking forward to meeting you, I remain,

Yours sincerely

Philip Roche  
Sales Director  
Abbey Woods  
Baldoyle Ind. Estate  
Dublin 13



J  
U  
N  
E  
95



## Competition League Table To July 95

### Advanced Winners

Position	Name	points	entries
1	H. Flynn	840	3
2	M. Healy	811	3
3	T. McGill	803	3
4	T. Newman	481	2
5	P. Mulvaney	217	1

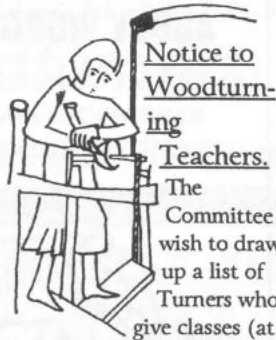
### Experienced Winners

Position	Name	points	entries
1	H. Kampff	1268	5
2	J. Wetherall	1180	5
3	H. East	843	4
4	O. Furniss	767	3
5	S. O'Reilly	468	2
6	T. Hayes	457	2
7	P. Sheridan	453	2
8	G. Cronin	396	3
9	F. McCann	354	2
10	J. Whelan	320	1
11	W. Caffrey	294	1
12	C. Caffrey	203	1
13	P. Murray	201	1
14	M. Bourke	188	1
15	D. Percy	174	1
16	W. Reynolds	132	1
17	A. Graham	130	1

### Beginners Winners

Position	Name	points	entries
1	A. Sloane	1010	4
2	E. O'Reilly	517	2
3	N. Castle	404	2
4	N. Redmond	289	2
5	J. Grant	256	1
6	B. Dunne	234	1
7	J. Byrne	228	1
8	M. Forde	222	1
9	P. McArdle	212	1
10	A. Lalor	210	1
11	P. Kelly	203	1
12	B. Bourke	192	1
13	M. Hunter	186	1
14	J. Binnie	154	1
15	R. O'Connell	149	1

And so this is the state of play on the long overdue league table. Please note that the people at the top of the table are those who enter the most, there is only one way to get to the top and that is to enter regularly. So watch this space for further details of those positions and for the prizes at the end of the year. Ed

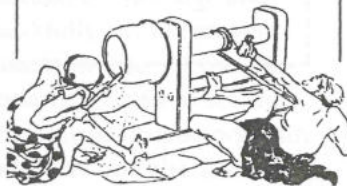


### Notice to Woodturning Teachers.

The Committee wish to draw up a list of Turners who give classes (at home or in schools) to use at exhibitions and sales. This will be available to all newcomers and interested parties at IWG Dublin Events. Those that have their own Promotion can forward it to the committee and then it can be distributed to those who wish to avail of these services, this is fairer to all who teach and may suit those in other areas. Would those who wish to have their names included on this list please forward their details in writing, including prices and times, to myself or any of the committee. Do not presume that we know your details.

To Date-  
Joe O'Neill 27 Ballinteer Drive,  
Tom Newman St Tiernans Community School.  
Peter Mulvaney Dun Laoighaire

*So Please send me your details for the above list, even if you are only interested in teaching on a one to one basis. Ed.*



### Competition Winners to date and Committee details.

Last months (July) winners with their mushrooms were, Advanced- T. Newman, Experienced- W.Caffrey, Beginners- E. O'Reilly. This was a very good turnout and it would be great to see as many entries in the future. The next four months competition pieces are as follows, September-Turned toy. October- Cup & Saucer (Beginners: saucer), November- Salad Servers. December- Christmas Ornament.

It was agreed by the committee that 3 wins means a promotion to the next class. It has been agreed that all demonstrations be limited to one hour in future to give time to the competition and to further discussion. This will in turn lead to longer specialised sessions in members workshops with smaller groups of people. We should try and organise some Sawdust Parties on the south side of the city as Mick Healy does in North Strand. The committee hope to get two or three master turners over the next year, at about four month intervals, so as to give us all an outside view of some specialist techniques that exist and give some of our regular demonstrators a break. This is only at the proposal stage so watch this space for further details. North Strand should be re-opening in September after its summer break, (Normally the third thursday in the month) contact Mick Healy for conformation and details.

Finally, the demonstration for September is Q & A session (Please Please phone any of the committee with your questions and we will endeavour to answer them), and October either Chainsaw or Dust Extraction. As I mentioned earlier this Newsletter is now going to be a by-monthly publication but it should still contain as much Information as before and be as up to date as possible. But please keep your contributions coming and many thanks for those received so far. Ed.

## For Sale

There are no items for sale this month but if you have something to sell or swap please contact me at the address below.

## Acknowledgment's

Seamus O'Reilly for 'To all who work in wood

L'ETACQ WOODCRAFTS  
for Birthwood Calendar

The Readers Digest  
(Garden) for Mountain Ash  
and Douglas Fir

American Lutherie For  
Fountain pens

Philip Byrne for 'Green and  
Wet Turning' letter

Hugh Flynn and Frank  
McCann for photos

Harry Kampff for league  
table  
Ed- IWG Dublin

## ABBEY WOODS

STOCKISTS OF VENEERS,  
HARDWOODS AND  
SELECTED SOFTWOODS



### INTRODUCING

### ABBEY WOOD CRAFT CENTRE

"The Home of Woodturning"

Bowl Blanks  
Turnery Squares  
Tooling  
Craft Accessories  
Finishes (Liberon & Rustins)  
Inlays  
Glues  
Flooring

### ABBEY WOODS LIMITED

Unit 92, Baldoyle Industrial Estate,  
Dublin, 13.

Telephone (01) 839 3435

Fax (01) 832 5968

### Newsletter publication details

For those who wish to contribute. Notes, Hints & Tips, Articles and Reviews are to be with the editor 14 days before the publication date. Personal adds and quick notes 7 days in advance.

Advertisers contact Editor.

Due to the frequency of publication, any item received after the above date will be transferred to the following month. Chapter members are offered the facility of free Personal adds; ie Selling lathe, looking for special tools, ect. Professionals selling items on a regular basis; ie tools, videos, woodturning courses, or other commercial ventures will be charged a small fee.

We now have a Gallery page which includes, the previous two months winning competition items, as well as photographs of the demonstrator turning. If there are any of you out there that have photos of yourselves, your lathe, you turning, or an item of interest in photo form we would be pleased to reproduce these for you in the newsletter. NOTE Please put your name on the back and if you wish the photo to be returned also your address, any photos not used immediately will be put on file and used at a later date, and do remember if possible to photograph against a plain background as these will reproduce better. We look forward to seeing your work & workshops.

Page 6



Phillip Murray, Editor  
17 Idrone Close,  
Templeogue,  
Dublin, 16.  
Phone, 494 1269  
Fax, 494 1269

Address Label Here